



**↓ DOWNTOWN**  
**↑ TOGETHER**  
SAN CARLOS DOWNTOWN SPECIFIC PLAN



# PRELIMINARY URBAN DESIGN CONCEPTS

# Urban Design and Placemaking Concepts

## Themes:

- Public Space Elements
- Alley Improvements
- Street Closure on 700 Block of Laurel Street



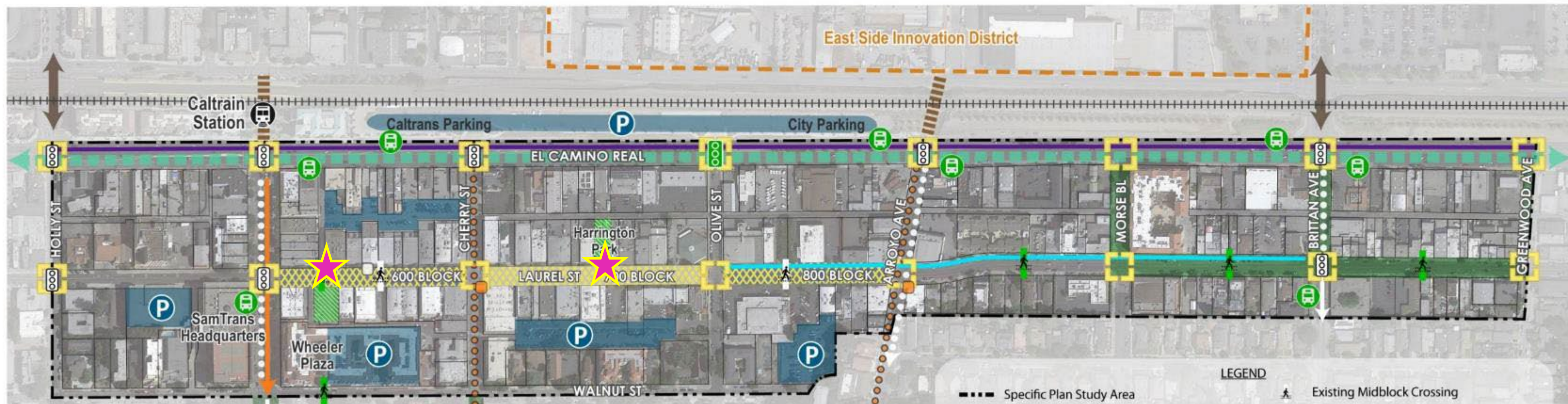
Source: Katja Dillmann

# Public Space Elements



# Public Spaces

- Laurel/Wheeler Plaza ★
- Harrington Park ★





## Retail & Restaurant Development with a Small Plaza Space



Source: City of San Carlos



Source: Al Savay



## Large Plaza Space



Source: Al Savay



Source: iStock



# Harrington Park Concepts

## Opportunities:

- Park & Plaza
- All Plaza
- Music & Stage





# Harrington Park – Park & Plaza



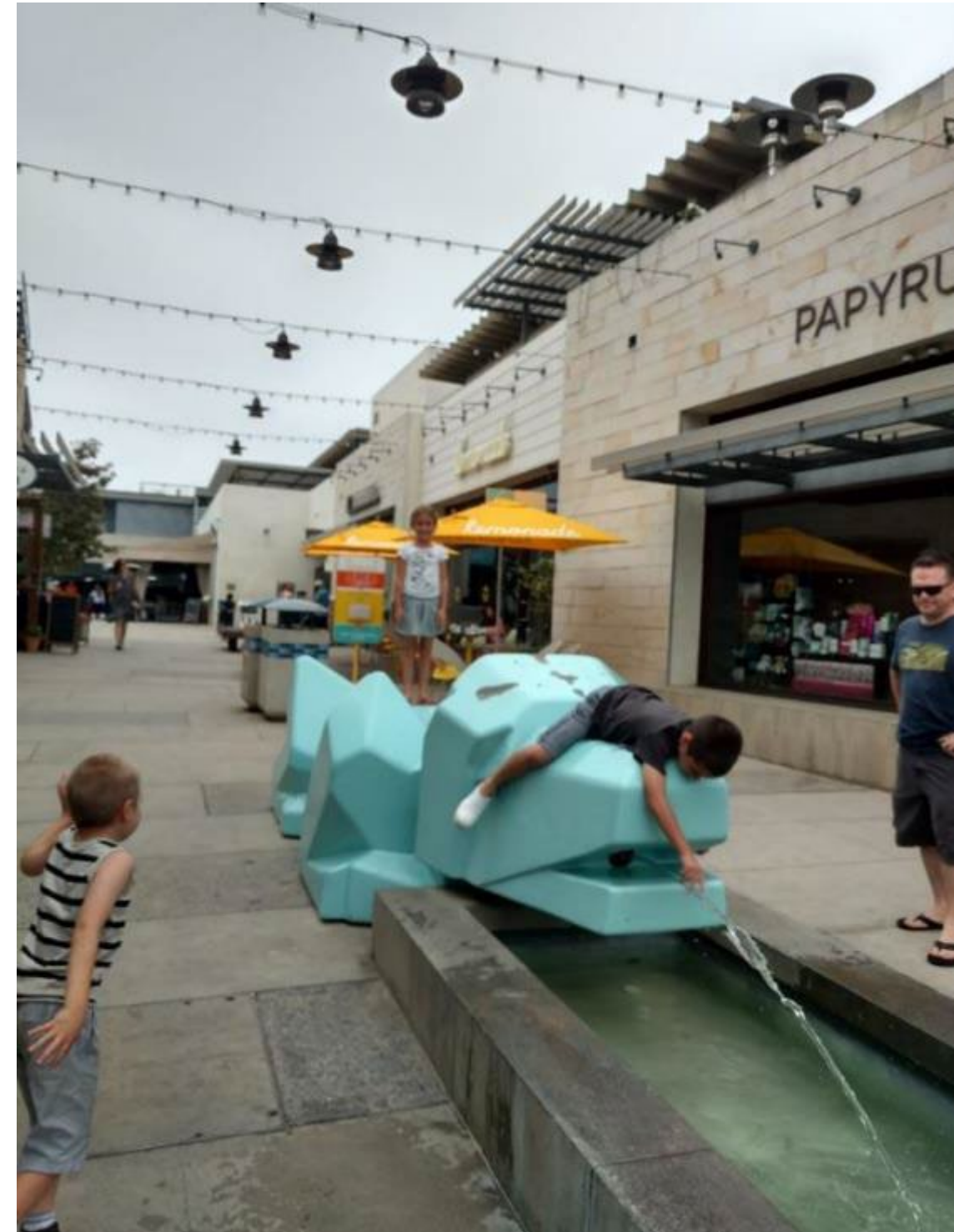
1. Wood Beams and Lighting  
2. Nature Play Area  
3. Vines/Wall Screen  
4. Fountain  
5. Tree/Planter/Seat Wall  
6. Memorial or Art Feature  
7. Memorial Wall  
8. Archway Entrance

9. Alley Access and Signage  
10. Tables and  
Chairs/Umbrellas

9. Alley Access and Signage  
10. Tables and  
Chairs/Umbrellas

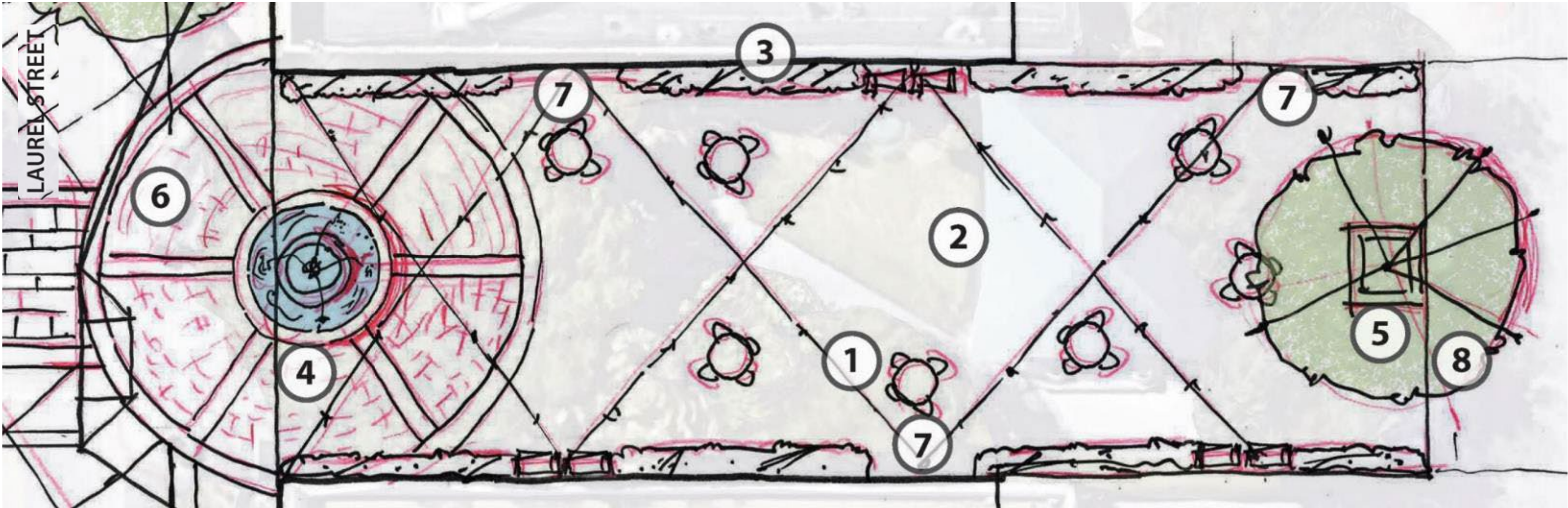


# Harrington Park – Park & Plaza





# Harrington Park – All Plaza



1. Bistro Lighting
2. Special Paving & Seating Area
3. Vines/Wall Screen
4. Fountain

5. Tree/Planter/Seat Wall
6. Special Paving Into Laurel St.
7. Memorial Wall/ Art Wall
8. Alley Access and Wayfinding

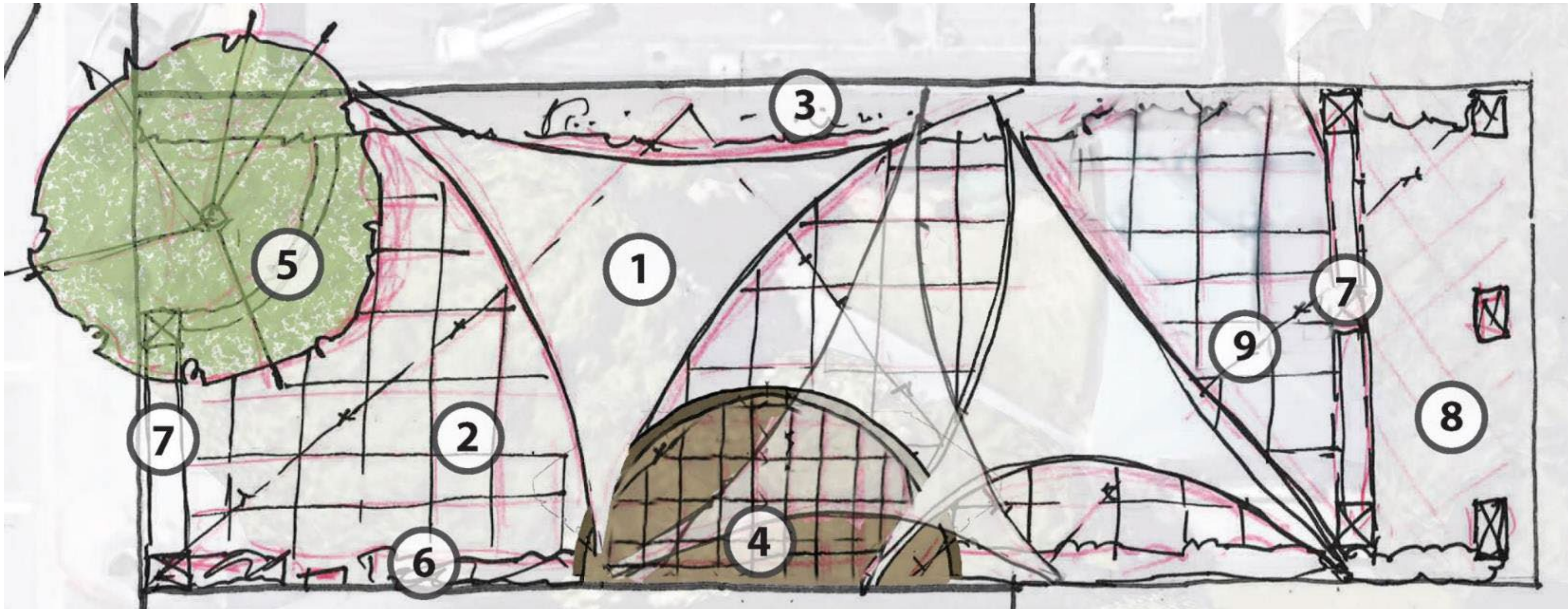


# Harrington Park – All Plaza





# Harrington Park – Music & Stage



1. Shade sails

2. Special Paving & Seating Area

3. Vines/Wall Screen

4. Stage

5. Tree/Planter/Seat Wall

6. Memorial Wall

7. Archway Entrance

8. Alley Access & Signage

9. Bistro Lighting



# Harrington Park – Music & Stage





# Possible Public Space Elements

- Fountain/ Water feature
- Movable furniture (tables, chairs, umbrellas)
- Lawn or landscaping
- Area where children can play
- Stage/music venue
- Open air with some shade covering
- Tree canopy
- Bistro lighting
- Public art



# Alley Improvements



# Alley Network





# Alleys – Current Conditions

- Lack of signage
- Lack of lighting and can feel unsafe
- Individual trash receptacles clutter
- No clear pedestrian path of travel
- Service / delivery congestion
- Private / public parking confusion
- Lack/minimal handicap accessible (ADA) parking
- Lack of bike parking and connectivity





# Proposed Enhancements

- Wayfinding
- Dedicated pedestrian paths of travel
- Dedicated delivery areas
- Dedicated trash receptacle areas
- Clearly denoted public parking
- Clearly marked ADA parking
- Bike parking and connectivity
- Pedestrian Scale/Street Lighting
- Alley Art/ Mural Program





# Alley Enhancement



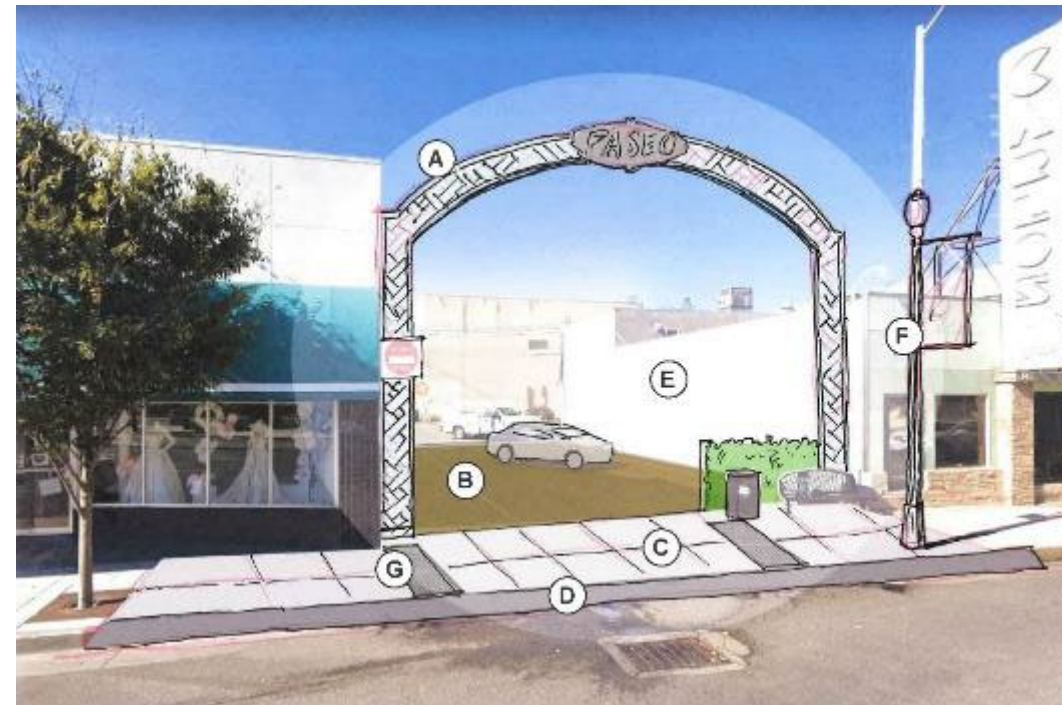
**KEY MAP**



**Example gateway feature**



**Existing: El Camino Real Alley from Laurel St.**



**Proposed: El Camino Real Alley from Laurel St.**

- A. Gateway Feature
- B. Special Parking Lot Pavement
- C. Level Sidewalk Crossing
- D. Rolled Curb
- E. Mural Wall Opportunity
- F. Decorative Street Light
- G. Truncated Dome



# Alley Enhancement



KEY MAP



Example decorative crosswalk



Existing: Public Parking between Walnut St. & Laurel St.



Proposed: Public Parking between Walnut St. & Laurel St.

- A. Crosswalk Striping and Ramp
- B. Pedestrian Crossing Sign
- C. Wayfinding Signage



# Alley Enhancement



KEY MAP



Example wayfinding



Existing: Parking between B of A and US Banks

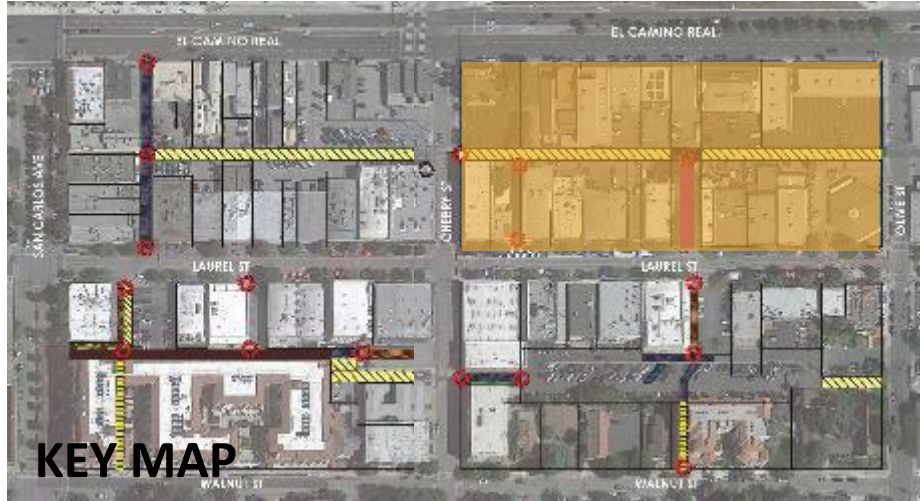


Proposed: Parking between B of A and US Banks

- A. Flush Concert Edge
- B. Special Parking Lot Pavement – Ped Route
- C. Wayfinding



# Alley Enhancement



**Example alleyway mural**



**Existing: Alley near Cherry St. and Laurel St.**



**Proposed: Alley near Cherry St. and Laurel St.**

- A. Decorative Wayfinding Signage
- B. Special Paving
- C. Lighting
- D. Rolled Curb
- E. Mural Wall Opportunity



# Alley Examples

Source: RRM Design Group



Source: Google Maps



Source: Google Maps



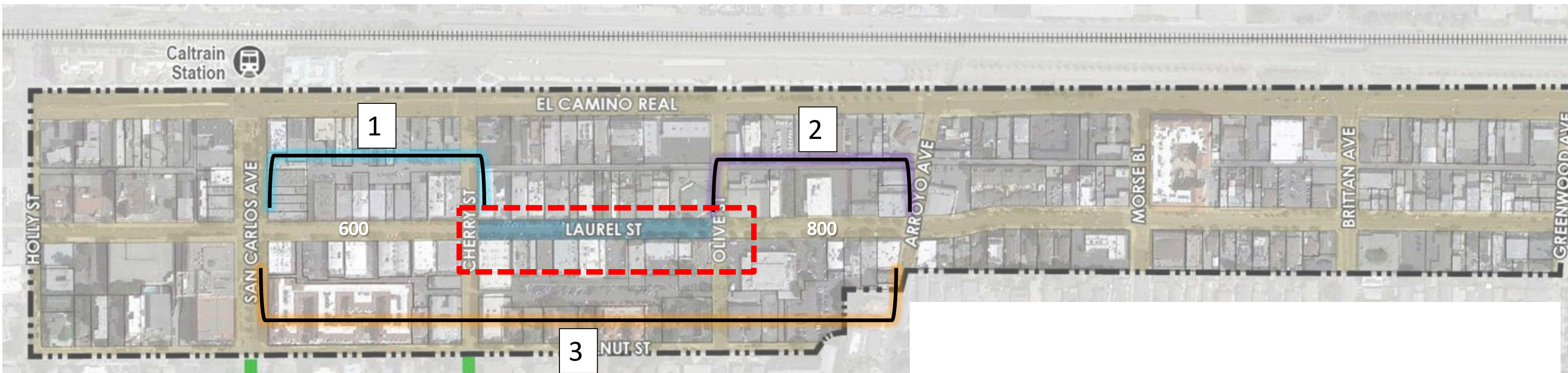
# Laurel Street



# Laurel Street – 700 Block

## Today's Focus – 700 Block

- **Future Decisions for the 600 & 800 Blocks of Laurel Street**
  - Extend Street Closure to **San Carlos** 1
  - Extend Street Closure to **Arroyo** 2
  - Extend Street Closure to **San Carlos and Arroyo** 3





# Laurel Street – 700 Block, 4 Options

## Flexible Closure Option:

Temporary in nature, spruced up but removable

## Widened Sidewalk Option:

Widen sidewalk, two travel lanes, parallel parking

## Plaza Option:

Full Closure as Plaza Concept

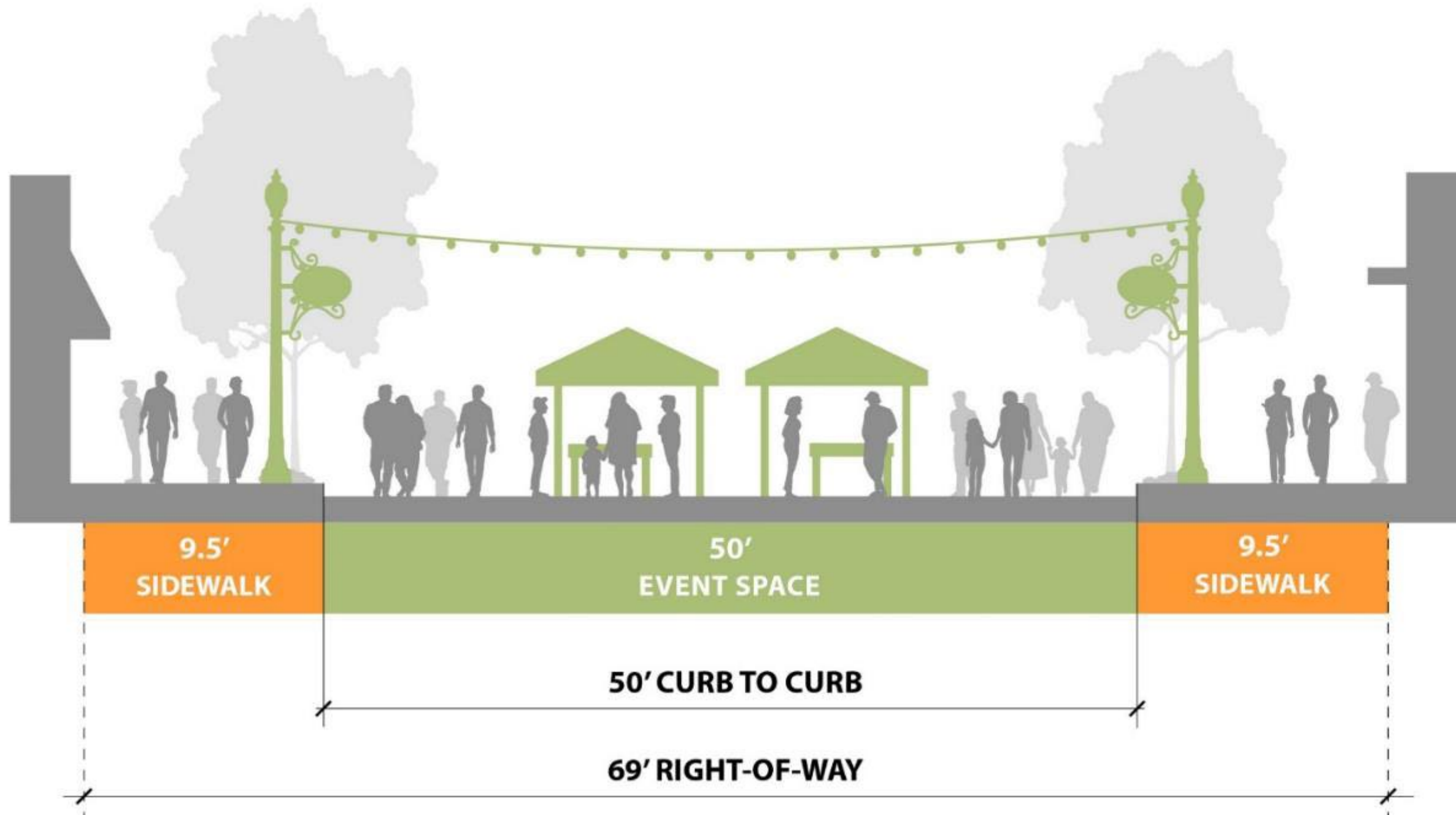
## Pre-2020 Option:

Eliminate Street Closure – open to cars as it was pre-pandemic



# Laurel Street – 700 Block – Flexible Closure

**Flexible Closure Option:** Temporary but spruced up  
New street furnishings and lighting, possible intermittent hours or events





# Laurel Street – 700 Block – Flexible Closure

Flexible Closure Option: Temporary but spruced up



Source: Al Savay



Source: Al Savay



## Flexible Closure Option

### Advantages:

- Maximum Flexibility
- Allows a variety of businesses to activate space on a temporary basis
- Facilitates community-building
- Improves pedestrian access

### Trade-Offs:

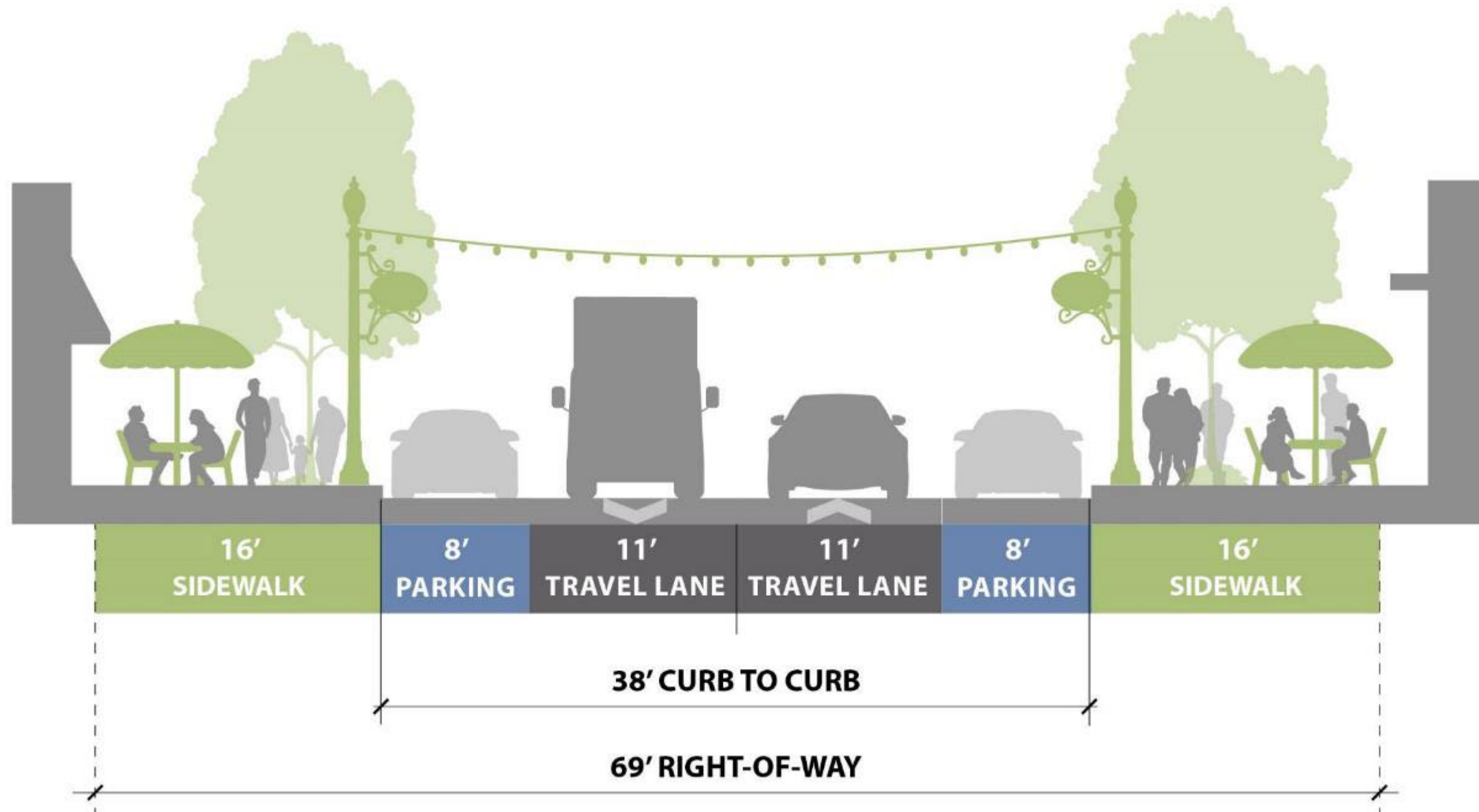
- Loss of 63 parking spaces
- Lacks full benefits of permanent street closure
- Intermittent traffic disruption – motorists must remember closure if hours are changed



# Laurel Street – 700 Block – Widened Sidewalk

## Widened Sidewalk Option:

Enhanced pedestrian environment, two travel lanes, retains some parking





# Laurel Street – 700 Block – Widened Sidewalk

## Widened Sidewalk Option:

Two travel lanes, retains some parking



Source: City of Ventura





## Widened Sidewalk Option

### Advantages:

- Expanded sidewalks with street furniture and lighting
- Pedestrians are retail adjacent
- Additional room for sidewalk dining
- Maintains vehicle access and adjacent parking

### Trade-Offs:

- Loss of large community space
- Loss of 20 parking spaces



# Laurel Street – 700 Block – Plaza

**Plaza Option:** Full closure, space is converted into a Plaza





# Laurel Street – 700 Block – Plaza

**Plaza Option:** Full closure, space is converted into a Plaza



Source: Al Savay



Source: Al Savay



# Laurel Street – 700 Block – Plaza

## Plaza Option

### Advantages:

- Dedicated community space
- Downtown plaza becomes a destination
- More space for retail, dining, and public space
- No limits on amenities, lighting, and special paving

### Trade-Offs:

- Loss of 63 parking spaces
- Delivery required from alley
- No vehicle visibility
- Minor traffic disruption
- Potential emergency access delays



# Laurel Street – 700 Block - Pre-2020 Option

## Pre-2020 Option: Eliminate Street Closure

Open to cars as it was pre-2020





## Pre-2020 Option

### Advantages:

- No loss of parking
- No new impact on how motorists navigate the Downtown
- No user confusion

### Trade-Offs:

- Lose a community asset
- Lose outdoor dining opportunity
- Lose flexibility of using space